



PEPO LA TUMAINI

ANNUAL REPORT 2020

TABLE OF CONTENTS

Note from our Executive Director	3
Our Impact.....	4
Education	6
Mental Health.....	7
Community Health	8
Diversified Need-Response Initiatives	10
Tumaini Trade and Talent Centre.....	12
Our Supporters	13
Global Financial Overview 2020.....	14



NOTE FROM OUR EXECUTIVE DIRECTOR

THE IMPACT OF COVID-19

Pepo La Tumaini Jangwani was born out of the HIV/Aids crisis in the 90's, and has since then responded to famine, drought and flooding in Isiolo. Our deep roots and network in our diverse communities make Pepo well placed to address the COVID-19 Pandemic. Our focus has been how to best allocate our resources, ensuring we sustain our impact and continue to serve those who depend on us. There is still a huge amount of confusion within our communities over what the virus is, who is at risk and how they can protect themselves while continuing to earn money for food and other necessities.

Social distancing has been a completely new concept in our community. At the beginning of the outbreak many community representatives came, sometimes walking for days, to our community centre to ask for help and explanations. As well as neglected children we witnessed fractured support systems caused by social disintegration. The uncertainty and lack of reliable information in Kenya, caused immense instability among the communities we serve, especially those 'living on the edge'; illiterate, non-digital communities living in pastoral areas with scarce access to water and adequate sanitation resources. Such families have become victims of displacement, left feeling abandoned and isolated.

While the longer-term financial implications from the global economy for our charity are undeniably a worry, much of our focus has been making sure we prevent infection as much as possible. We have been making sure those adversely affected by the current conditions have had access to food, water and soap. The health and welfare needs have increased this year, because the children have been in their homes rather than at school, as a result the focus has turned more towards the community.

When schools re-open in 2021 we aim to reduce dependency on food handouts. The micro- financing and small business projects we have started this year are helping to empower people to earn for themselves and not be reliant on food handouts. While we hope to keep to our strategic plan as much as possible, our 2020 mantra has been to Respond - Survive – Maintain. It remains a fundamental part of the work of Tumaini to restore dignity and support everyone as much as possible.

Sarah Kruger, Executive Director



OUR IMPACT

KEY ORGANISATIONAL ACHIEVEMENTS OVER THE LAST 12 MONTHS

Made and distributed

7000

masks with breathable inner linings, produced our own detergents, and made our own water dispensers for distribution to high-risk areas (ghetto-urban and rural manyatta).

Distributed

500

water containers and bars of soaps and sanitizers to vulnerable households across the poorest households in the local slum areas.

Delivered a weekly feeding scheme for **6** months accessible to

150

of the most vulnerable children including those living on the streets and those children in charge of looking after their younger siblings while their parent goes out to look for work.

We made

56

outreach visits and dispatched distributional health services to our **7** rural centre points, establishing leadership teams in charge of managing COVID resources.

We boosted home based carer (HBC) services, to provide regular support to

79

patients, providing emotional support and food packages, soap and hygienic equipment.

We were successful in securing

99

childcare placements and were able to provide **113** additional food packages to our Mother-carer volunteers (foster families) and young mothers, taking care of young children.





Sexual Health & HIV education and awareness activities reached

3,000
young people*

60

children included in the Art4Life Therapy programme.

22

women in self-help groups were educated on protecting the wellbeing of their children and supported to start local micro-finance initiatives.

84

youth were coached as leaders for co-existence and conflict mitigation, championing the rights of displaced communities.

*Our Youth Peer Provider SRH network expanded its community outreach programme in response to COVID, adapting initiatives in response to the new emerging needs. They took increased active leadership in managing community outreach events and combining COVID awareness with SRH education and referrals for STI testing and treatment.

EDUCATION

BENEFICIARIES:

TSS BOARDING CENTRE:

75 children heading households and their families (total **300** – inclusive of family feeding programme).

ECD & LOWER PRIMARY:

135 – 150 children living in extreme poverty.

After a full year of closure in 2020, we are extremely relieved to be re-opening our school in January 2021. Our school provides more than just education to children and adolescents. In addition to reading, writing, maths, pupils learn social and emotional skills, get exercise and have access to mental health support and other health and welfare services. Our school is a safe haven for neglected children where they can be fed three regular meals a day and find comradery in their peers.

At the beginning of the year, we enrolled 200 pupils in our school accessing health, welfare and nutritional feeding programmes. For the children returning home in March, we boosted our family feeding support and increased Mothercare services for children without safe home options

After school closures in March, we were limited to accommodating only 15 of our most vulnerable children who had no safe home options. We were able to create a home learning environment for them, teaching them additional life skills and offering therapeutic support. Pepo managed to create a sanctuary at home camp to teach girls how to sustain and maintain themselves with dignity and pride during the crisis.

We succeeded in delivering and coordinating **37** small workshops for young girls who became pregnant and provided **90** girls with sanitary and baby supplies.

Following an unexpected announcement from the government in October, we were instructed to re-open our primary school for only two classes as part of their staggered re-entry system. We are currently 're-thinking education' as we plan for the complete re-opening of our school establishments and how to best ensure we are well equipped to meet all new safety requirements.



MENTAL HEALTH

Mental illnesses are often under-diagnosed in Kenya because symptoms are either not recognized or are wrongly attributed to spiritual or behavioural issues. Fear of stigma and abuse from their families also prevents young people from seeking help. The mental health care needs of young people are not acknowledged, and when they are, there are insufficient numbers of professionals trained to provide such care. The World Health Organization reports that mental health problems affect 10 - 20% of children and adolescents worldwide. They also estimate that half of all mental illness begins by age 14, though most cases go undetected and untreated.



Five of our teenage boys from street families, who stayed at Pepo this year through the COVID pandemic, have each so far completed 12 sessions of individual play therapy. Their regular weekly commitment has made a significant impact on their development, improving their social skills and reducing their anti-social behaviour. The boys feel more confident to face their fears and are significantly happier and therefore more open to change. Play therapy is helping them recover from trauma and neglect, as well as preventing delinquency.

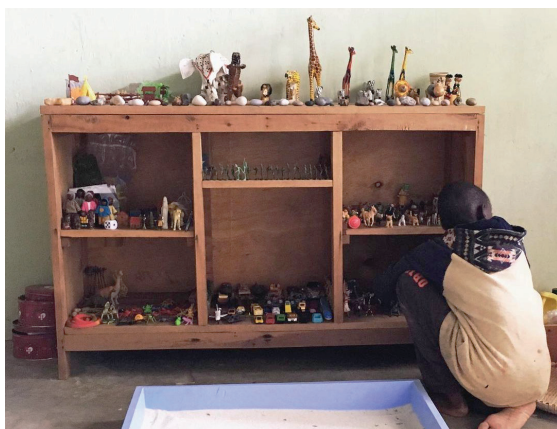
12 Expressive Arts sessions for

37

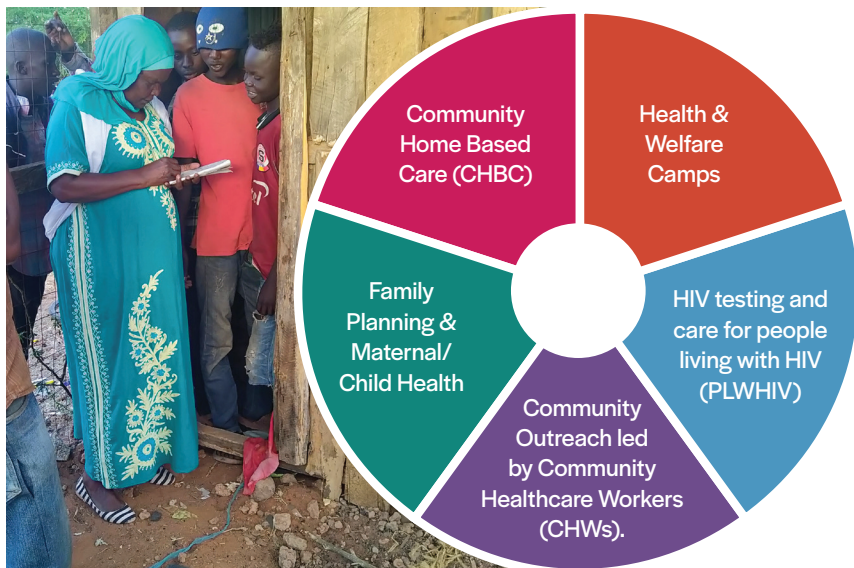
girls focused on trauma recovery, self-worth, sexuality, assertiveness and communication skills.

60

Individual play therapy sessions with adolescent boys focused on reducing anti-social behaviour, building self-care and social skills and cultivating consideration and empathy.



COMMUNITY HEALTH



Community Health: Reaches

7,500 +

across **9** community centre points –
This includes educational awareness
and peacebuilding activities to very rural
traditional communities.

Youth Peer Provider Network: Reaches

3,000 +

local youth in Isiolo.

Our strategic plan towards building a community health care model means that we are reducing clinic based service provision. We are now focusing our efforts on community centred initiatives that address sexual health, maternal and child health needs and treatment support for people living with HIV. Our health department is being led by key leaders from the youth, home based care and community health worker outreach teams.

30,000 Covid/ SRH Education & Awareness
(Individuals reached through local radio shows)

17 YPP Leaders

21 YPP Advocacy Groups

291 YPP Members



3,150 Youth referrals. Youth for youth friendly sexual health support at Tumaini Health Centre, including HIV/STI testing, counselling, contraceptives, family planning advice and pregnancy tests.



This year Kenya has suffered with treatment shortages for people living with HIV, causing poor adherence and drug resistance. Stigma related to COVID has also meant that people living with HIV now fear to access services at the hospital. UNAIDS estimates that the associated mass disruption of society could lead to an additional 123,000 to 293,000 new cases of HIV and 69,000 to 148,000 additional AIDS-related deaths globally within the next two years.

Through our Youth Peer Provider (YPP) programme, we are empowering minority groups of women and youth living with HIV to advocate for their rights and amplify their voice to initiate change. In celebration of World Aids Day on December 1st, our YPP team organised a local football play-off and youth engagement day in Isiolo to raise awareness about increasing rates of HIV among the youth and the rising influence of social media.

In response to the need for increased support and awareness, we have been co-ordinating small youth activities in the community, door to door home visits, counselling support and referrals for sexual health services. This year our YPP have identified and registered 14 new informal settlements in the urban market area of Isiolo. As well as providing them with bi-weekly meals and health supplies, we are supporting our youth to mobilise support and petition the county government to act against drug use, which is now escalating at an alarming rate.



DIVERSIFIED NEED-RESPONSE INITIATIVES

COMMUNITY INITIATIVE ACTION PROJECT

There is this myth that males aren't victims. It's central to masculine gender socialization, and boys pick up on it very early in life. This myth implies that a boy or man who has been sexually used or abused will never be a "real man." Pepo La Tumaini is being led by the youth in Isiolo to challenge the cultural myths surrounding the sexual abuse and assault of boys. In partnership with the local security administration Tumaini's new Community Initiative Action project is focusing on stopping sexual abuse at household level against all children across 15 villages. So many boys are especially vulnerable to violence and exploitation then shamefully silenced in the fear of no longer being accepted as a man in society.

**SEXUAL ABUSE CASES
IDENTIFIED AND ADDRESSED:**

28
(boys)

13
(girls)

GIRLS CLUBHOUSE

We have thought about the particular vulnerabilities faced by the girls in our community, and how we can offer solutions to support and empower them throughout the COVID-19 crisis. The new Girl's Clubhouse will provide a sanctuary for learning and therapy, as well as provide essential distributional services for young mothers and girls in Isiolo. This forms part of our efforts in considering diversification of our services and transition to new ways of delivering youth empowerment services to our communities.





PEACEBUILDING

Displacement has unfortunately become a major issue in Isiolo, especially this year with COVID threatening indigenous communities livelihoods, increasing social and economic anxiety. Pepo has been spearheading efforts to advocate for peaceful co-existence, negotiating with neighbouring groups to help accommodate many of the displaced families, pushed out of their settlements due to tribal clashes.

In particular, we have been supporting the Pepo La Tumaini Grandmother Minority Group in peacebuilding efforts to protect their homes from outside land grabbers. Tumaini Senior School pupils have been applying their vocational training skills to help rebuild some of the traditional homes that were destroyed. This has been an invaluable opportunity for the children as they learn about the vital concepts of community building.

In September, youths, armed with crude weapons, raided the 10-acre land behind Tumaini Senior School, occupied by over 50 women and brought down the timber houses and other structures whose construction was underway, forcing the residents to scamper for safety. After championing the women's case in court, we are currently awaiting the verdict and hope for the legal acquisition of land deeds for the women's ancestral land, where their loved ones are buried. Our efforts in mitigating conflict and potential civil unrest were acknowledged and praised on national news channels.



TUMAINI TRADE AND TALENT CENTRE

Aiming to reach
50 +
youth during the 1st
pilot year 2021



Our new centre is a symbol of hope and progress for our future in Kenya. We will be testing and developing the best way to prepare the next generation for the Kenyan job market and build a user-fee model that will support operational costs and build financial sustainability in the future. 75% of the out-of-school youth in Isiolo do not have regular, full time employment. A vast majority are now falling into poverty and despair, with new 'camps' (informal settlements) popping up all over the fast-developing town with gangs operating throughout. Pepo has a unique link with these communities as we have been providing essential support services to them throughout the pandemic.

Built by local builders and Tumaini youth using recycled materials, local stone and handmade blocks made by Tumaini Senior School pupils. The building of the centre has been a lifeline during COVID giving students practical, on the job training. The design of the centre was greatly influenced by the youth who offered advice on creating an accessible youth friendly space combining modern development and traditional heritage.



THE PROPERTY RACE DAY

The Tumaini Trade and Talent Centre (TTTC) is the culmination of years of work and planning to provide an option for the children and young people in our care and in the local community to become self-sustaining adults. Vocational training has always been a part of our curriculum at the Senior School and we have offered opportunities and apprenticeships to local community members living in poverty with all our construction projects. In 2018 we secured a construction grant from 'Property Race Day' in the UK to build the new Vocational Training centre. Construction will be completed in Q1 2021 and we are keen to launch our first pilot programmes from May 2021 onwards.



OUR SUPPORTERS

The unforeseen circumstances this year have created a wave of unexpected challenges on mental and physical health. Thank you to all our special friends and donors who continue to support us through this difficult time. The combination of local and international efforts has enabled us to keep the wind of hope blowing for the vulnerable women and children in our community who feel so hopeless at times like these.

Thank you to Pastoral Women Initiative in Isiolo for the special donation of UNICEF girl child supplies of sanitary pads, underwear and soaps, helping girls to maintain their dignity during COVID. In partnership with Star of Hope, Isiolo we succeeded in supplying 798 households living in extreme poverty with food packages. Their sustained partnership ensured that we could help protect our most vulnerable homes from hunger and starvation.



We are grateful to the Neumann family in Pointclear Alabama, for producing a collection of pleated cotton masks for sale to support our children returning to school. Special thanks to Suzanne Lognion for volunteering her time and skills to help sew the beautiful hand-made Kenyan Kikoi masks with animal embroidery. Thanks to their efforts we were able to raise \$8,000 to help meet the additional needs this year.



Special thanks to the Foundations who made additional donations to us during this emergency period enabling us to provide support for families and young children during this crisis. We would also like to thank our many individual supporters around the world, who generously donate to our various programmes.



The Rosalbe Foundation



The Claude and Sofia Marion Foundation

